

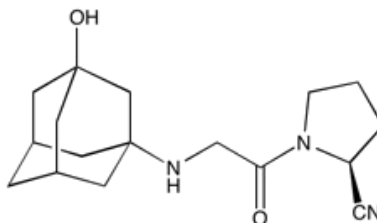
Catalog # 10-2887

Vildagliptin

(S)-1-[N-(3-Hydroxy-1-adamantyl)glycyl]pyrrolidine-2-carbonitrile

LAF237

Lot # X106112



A potent inhibitor of dipeptidyl peptidase IV (DPP IV), an enzyme that cleaves glucagon-like peptide 1 (GLP-1).¹ Delaying the degradation of GLP-1 extends the action of insulin and suppressing the release of glucagon which results in reduction in elevated blood glucose levels (hyperglycemia).² Clinically useful antidiabetic agent. Ameliorates cognitive deficits in streptozotocin-induced Alzheimers disease model.³ Displays protective effects on β -cells by inhibition of ER stress in a mouse model.⁴

- 1) Balas *et al.* (2007), *the dipeptidyl peptidase IV inhibitor vildagliptin suppresses endogenous glucose production and enhances islet function after single-dose administration in type 2 diabetic patients*; J. Clin. Endocrinol. Metab., **92** 1249
- 2) Ahren *et al.* (2004), *Inhibition of dipeptidyl peptidase-4 reduces glycemia, sustains insulin levels and reduces glucagon levels in type 2 diabetes* J. Clin. Endocrinol. Metab., **89** 2078
- 3) Kosaraju *et al.* (2013), *Vildagliptin: an anti-diabetes agent ameliorates cognitive deficits and pathology observed in streptozotocin-induced Alzheimer's disease*; J. Pharm. Pharmacol., **65** 1773
- 4) Shimizu *et al.* (2012), *DPP4 inhibitor vildagliptin preserves β -cell mass through amelioration of endoplasmic reticulum stress in C/EBP β transgenic mice*; J. Mol. Endocrinol., **49** 125

PHYSICAL DATA

Molecular Weight:	303.40
Molecular Formula:	C ₁₇ H ₂₅ N ₃ O ₂
Purity:	98% by HPLC
	NMR: (Conforms)
Solubility:	DMSO (up to 45 mg/ml), DMF (up to 20 mg/ml), or ethanol (up to 20 mg/ml)
Physical Description:	White solid
Storage and Stability:	Store as supplied at -20°C for up to 2 years from the date of purchase. Solutions in DMSO, DMF, or ethanol may be stored at -20°C for up to 3 months.

Materials provided by Focus Biomolecules are for laboratory research use only and are not intended for human or veterinary applications.