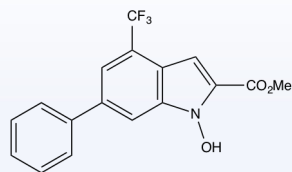


# Cancer Cell Metabolism



NHI-2

## NHI-2

NHI-2 is a selective inhibitor of Lactate Dehydrogenase A (LDHA) – IC<sub>50</sub> *in vitro* = 14.7 μM (NADH), 10.5 μM (Pyruvate)<sup>1,2</sup>

10-4555                      10 mg / \$95.00, 50 mg / \$395.00

## CBR-5884

Potent and selective inhibitor of 3-phosphoglycerate dehydrogenase (PHGDH), IC<sub>50</sub>=33 μM<sup>3</sup>

10-1588                      5 mg / \$70.00, 25 mg / \$280.00

## AGI-5198

AGI-5198 is a potent (IC<sub>50</sub> = 70 nM) inhibitor of R132H mutant isocitrate dehydrogenase 1 (IDH1).<sup>4</sup>

10-4599                      5 mg / \$70.00, 25 mg / \$225.00

## MF-438

MF-438 is a potent inhibitor of stearoyl-CoA desaturase 1 (SCD1) - IC<sub>50</sub> = 2.3 nM.<sup>5</sup>

10-4558                      5 mg / \$60.00, 25 mg / \$250.00

## CT-2584

Cytotoxic agent that alters phospholipid biosynthesis via inhibition of CTP:choline-phosphate cytidyltransferase.<sup>6,7</sup>

10-4560                      5 mg / \$125.00, 25 mg / \$475.00

## R162

R162 is a selective inhibitor of Glutamate Dehydrogenase 1. Selective over 6-phosphogluconate and fumarate hydratase.<sup>8</sup>

10-4603                      10 mg / \$50.00, 50 mg / \$185.00

## Lonidamine

Lonidamine is a mitochondrial hexokinase inhibitor.<sup>9</sup> The disruption of the mitochondrial transmembrane potential has also been linked to its apoptotic effects.<sup>10</sup>

10-4563                      10 mg / \$45.00, 50 mg / \$175.00

## PFK15

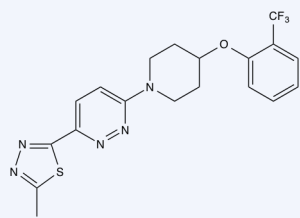
PFK15 is a selective inhibitor of 6-Phosphofructo-2-kinase/fructose-2,6-biphosphatase 3 (PFKFB3), an enzyme that is constitutively expressed in neoplastic cells and is required for the high glycolytic rate (Warburg effect) of these cells.<sup>11,12,13</sup>

10-4580                      5 mg / \$45.00, 25 mg / \$170.00

## CB-839

CB-839 is a potent (IC<sub>50</sub> = 24 nM) inhibitor of glutaminase (KGA and GAC).<sup>14,15</sup>

10-4556                      5 mg / \$90.00, 25 mg / \$325.00



MF-438

Visit our [Cellular Metabolism page](#) for a comprehensive listing of small molecule reagents including our new [Cancer Cell Metabolism Library!](#)

## References

1. Granchi *et al.* (2013) *Org.Biomol.Chem.* 11 6588
2. Maftouh *et al.* (2014) *Br.J.Cancer* 110 172
3. Mullarky *et al.* (2016) *PNAS* 113 1778
4. Popovici-Muller *et al.* (2012) *ACS Med.Chem.Lett.* 3 850
5. Leger *et al.* (2010) *Bioorg.Med.Chem.Lett.* 20 499
6. Finney *et al.* (2000) *Cancer Res.* 60 5204
7. Cheeseman *et al.* (2000) *Br.J.Cancer* 83 1599
8. Lingtao *et al.* (2015) *Cancer Cell* 27 257
9. Yasuda *et al.* (2001) *J.Biol.Chem.* 276 43994
10. Floridi *et al.* (1981) *Cancer Res.* 41 4661
11. Clem *et al.* (2013) *Mol.Cancer Ther.* 12 1461
12. Zhu *et al.* (2016) *PLoS One* 11 e0163768
13. Li *et al.* (2017) *J.Exp.Clin.Cancer Res.* 36 7
14. Gross *et al.* (2014) *Mol.Cancer Ther.* 13 890
15. Jacque *et al.* (2015) *Blood* 126 1346