

# Potassium Channels

## NS 1619

Activator of the large-conductance Ca<sup>2+</sup>-dependent potassium channel (K<sub>Ca</sub>1.1; BK)<sup>1</sup>

**Product No: 10-4643**                      **5 mg**    **25 mg**

## VU0134992

Blocker of the inward rectifier potassium channel K<sub>IR</sub>4.1.<sup>2</sup> Also blocks K<sub>IR</sub>3.1/3.2, K<sub>IR</sub>3.1/3/4, and K<sub>IR</sub>4.2.

**Product No: 10-4651**                      **5 mg**    **25 mg**

## ML418

ML418 is a blocker of inward rectifier potassium channels K<sub>IR</sub>7.1 and K<sub>IR</sub>6.2.<sup>3</sup>

**Product No: 10-4652**                      **5 mg**    **25 mg**

## Linopirdine dihydrochloride

Linopirdine is a blocker of the voltage and lipid-gated potassium channel K<sub>V</sub>7.1.<sup>4</sup>

**Product No: 10-4654**                      **5 mg**    **25 mg**

## A1899

Potent blocker of two-pore domain potassium channels K<sub>2P</sub>3.1(TASK-1) and K<sub>2P</sub>9.1(TASK-3).<sup>5</sup>

**Product No: 10-4656**                      **5 mg**    **25 mg**

## ML365

Potent and selective K<sub>2P</sub>3.1 (TASK-1) blocker (100x over TASK-3).<sup>6</sup>

**Product No: 10-4658**                      **5 mg**    **25 mg**

## Repaglinide

Blocker of the ATP-sensitive potassium channel K<sub>IR</sub>6.<sup>7</sup> Displays selectivity for pancreatic K<sub>IR</sub>6.2/SUR1 over cardiac K<sub>IR</sub>6.1/SUR2B and K<sub>IR</sub>6.2/SUR2A.<sup>8</sup>

**Product No: 10-4661**                      **20 mg**    **100 mg**

## VU0810464

Potent and selective activator of the G protein-gated inwardly-rectifying potassium channel K<sub>IR</sub>3 (GIRK). Displays selectivity for GIRK1/2 (brain) over GIRK1/4 (heart).<sup>9</sup>

**Product No: 10-4662**                      **5 mg**    **25 mg**

## Dofetilide

Clinically useful antiarrhythmic agent that selectively blocks the rapid component of the delayed rectifier outward potassium current (I<sub>Kr</sub>) via selective blockage of the K<sub>V</sub>11.1 (hERG) channel.<sup>10</sup>

**Product No: 10-1151**                      **10 mg**    **50 mg**

## Diazoxide

Hypoglycemic agent that opens potassium channels via direct binding to the SUR1 subunit of K<sub>ATP</sub> channels.<sup>11</sup>

**Product No: 10-2237**                      **100 mg**    **500 mg**

## ML335

Selective activator of the two-pore domain potassium channel TREK subfamily (K<sub>2P</sub>2.1 and K<sub>2P</sub>10.1; TREK-1 and TREK-2).<sup>12</sup>

**Product No: 10-3648**                      **5 mg**    **25 mg**

## SKA-31

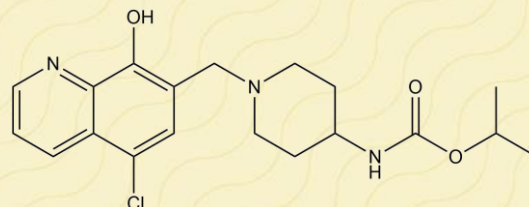
Activator of calcium-activated potassium channels K<sub>CA</sub>3.1, K<sub>CA</sub>2.1, and K<sub>CA</sub>2.2.<sup>13</sup>

**Product No: 10-5483**                      **10 mg**    **50 mg**

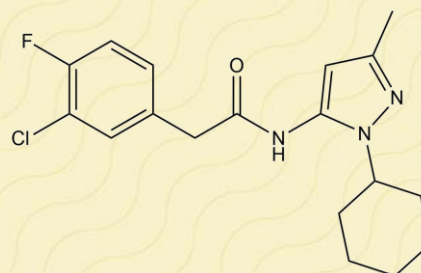
## Penitrem A

Selective, irreversible blocker of the smooth muscle high conductance Ca<sup>2+</sup>-activated potassium channel K<sub>CA</sub>1.1 (BK).<sup>14</sup>

**Product No: 10-2099**                      **1 mg**    **5 mg**



**ML418**



**VU0810464**

**This is a small sample of our products in this research field. Visit our website or contact us for a complete listing or to discuss your specific needs.**

## REFERENCES

1. Olesen *et al.* (1994) *Eur. J. Pharmacol.* **251** 53
2. Kharade *et al.* (2018) *Mol. Pharmacol.* **94** 926
3. Swalw *et al.* (2016) *ACS Chem. Neurosci.* **7** 1013
4. Schnee and Brown (1998) *J. Pharmacol. Exp. Ther.* **286** 709
5. Streit *et al.* (2011) *J. Biol. Chem.* **286** 13977
6. Flaherty *et al.* (2014) *Bioorg. Med. Chem. Lett.* **24** 3968
7. Mark and Grell (1997) *Br. J. Pharmacol.* **121** 1597
8. Stephan *et al.* (2006) *Diabetologia* **49** 2039
9. Wieting *et al.* (2017) *ACS Chem. Neurosci.* **8** 1873
10. Snyders and Chaudhary (1996) *Mol. Pharmacol.* **49** 949
11. Trube *et al.* (1986) *Pflugers Arch.* **407** 493
12. Lolicato *et al.* (2017) *Nature* **547** 364
13. Sankaranarayanan *et al.* (2009) *Eur. J. Pharmacol.* **831** 60
14. Asano *et al.* (2012) *J. Pharmacol. Exp. Ther.* **342** 453