



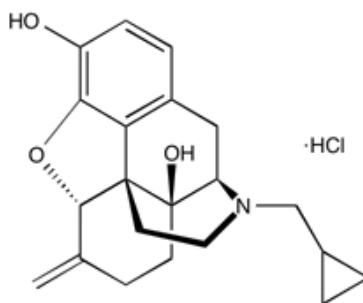
Catalog # 10-1049

Nalmefene · HCl

58895-64-0

5(α)-17-(Cyclopropylmethyl)-4,5-epoxy-6-methylene-morphinan-3,14-diol hydrochloride

Lot # X101995



Opioid antagonist. Very similar activity profile to naloxone however displays slower onset and longer duration of action¹. Antagonizes the effects of salvinorin² (κ-agonist) as well as herkinorin³ (μ-agonist). Has been used as a therapeutic for treatment of alcohol dependence⁴.

- 1) Osborn *et al.* (2010), *In vivo* characterization of the opioid antagonist nalmefene in mice; Life Sci., **86** 624
- 2) Butelman *et al.* (2009), *Unconditioned behavioral effects of the powerful kappa-opioid hallucinogen salvinorin A in non-human primates: fast onset and entry in cerebrospinal fluid*; J. Pharmacol. Exp. Ther., **328** 588
- 3) Butelman *et al.* (2008), *The effects of herkinorin, the first mu-selective ligand from salvinorin A-derived scaffold, in neuroendocrine biomarker assay in nonhuman primates*; J. Pharmacol. Exp. Ther., **327** 154
- 4) Soyka and Rosner (2008), *Opioid antagonists for pharmacological treatment of alcohol dependence – a critical review*; Curr. Drug Abuse Rev., **1** 280

PHYSICAL DATA

Molecular Weight:	375.82
Molecular Formula:	C ₂₁ H ₂₅ NO ₃ · HCl
Purity:	99% by HPLC
	NMR: (Conforms)
Solubility:	Water (up to 25 mg/ml)
Physical Description:	White solid
Storage and Stability:	Store as supplied desiccated at room temperature for up to 2 years from the date of purchase. Solutions in distilled water may be stored at -20°C for up to 1 month.

Materials provided by Focus Biomolecules are for laboratory research use only and are not intended for human or veterinary applications.