

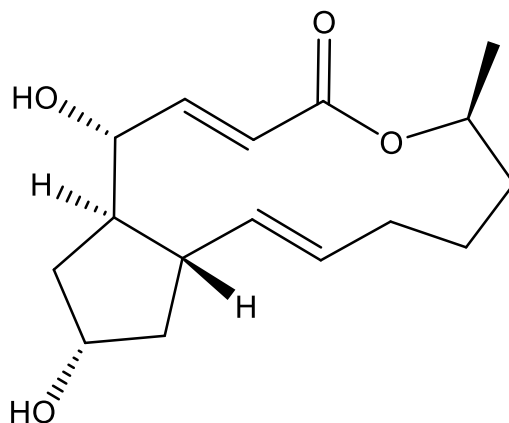
Catalog # 10-1071

Brefeldin A

CAS# 20350-15-6

Fermentation product from *Penicillium brefeldianum*

Lot # X102902



Specific inhibitor of protein translocation from endoplasmic reticulum to Golgi. Induces apoptosis. Activates sphingomyelin metabolism. Cell permeable.

- 1) Fujiwara *et al.* (1988) *Brefeldin A causes disassembly of the Golgi complex and accumulation of secretory proteins in the endoplasmic reticulum*; J. Biol. Chem., **263** 18545
- 2) Shao *et al.* (1996), *Brefeldin A is a potent inducer of apoptosis in human cancer cells independently of p53*; Exp. Cell Res., **227** 190
- 3) Linardic *et al.* (1996), *Brefeldin A promotes hydrolysis of sphingomyelin*; Cell Growth Differ. **7** 765

PHYSICAL DATA

Molecular Weight:	280.37
Molecular Formula:	C ₁₆ H ₂₄ O ₄
Purity:	99% by TLC
	NMR: Conforms
Solubility:	DMSO (up to 100 mg/ml) or ethanol (up to 25 mg/ml with warming)
Physical Description:	White solid
Storage and Stability:	Store as supplied at -20°C for up to 2 years from the date of purchase. Solutions in DMSO or ethanol may be stored at -20°C for up to 1 month.

Materials provided by Focus Biomolecules are for laboratory research use only and are not intended for human or veterinary applications.