

**Catalog # 10-1147**

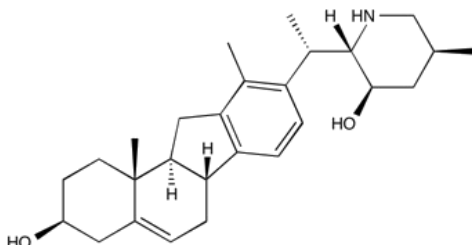
**Veratramine**

(3 $\beta$ , 23 $\beta$ )-14,15,16,17-Tetrahydroveratraman-3,23-diol

NSC 17821; NSC 23880

CAS# 60-70-8

Lot # X101419



Veratramine is a teratogenic steroidal alkaloid found in the corn lily (*Veratrum sp.*)<sup>1,2</sup>. It is an analog of cyclopamine which can inhibit the hedgehog signaling pathway-dependent proliferation in NIH/3T3 cells at 8  $\mu\text{M}^1$ . Cell permeable. **SPECIAL HANDLING PRECAUTIONS: This product is teratogenic. Women who are, or may be pregnant should not handle this compound.**

- 1) Tang *et al.* (2010), *Antitumor and antiplatelet activity of alkaloids from veratrum dahuricum*; *Phytother. Res.*, **24** 821
- 2) Mahindroo *et al.* (2009), *Hedgehog-Gli signaling pathway inhibitors as anticancer agents*; *J. Med. Chem.*, **52** 3829

**PHYSICAL DATA**

Molecular Weight:	409.60
Molecular Formula:	C <sub>27</sub> H <sub>39</sub> NO <sub>2</sub>
Purity:	98% by TLC
	NMR: (Conforms)
Solubility:	DMSO (up to 12 mg/ml) or Ethanol (up to 10 mg/ml))
Physical Description:	Tan solid
Storage and Stability:	Store as supplied desiccated at -20°C for up to 3 years from the date of purchase. Solutions in DMSO or ethanol may be stored at -20°C for up to 3 months.

**Materials provided by Focus Biomolecules are for laboratory research use only and are not intended for human or veterinary applications.**