

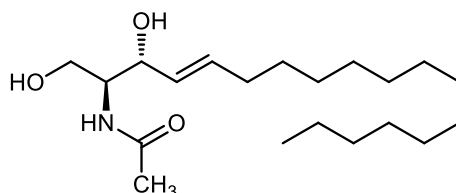
**Catalog # 10-1181**

**C2-Ceramide**

CAS# 3102-57-6

N-Acetyl-D-erythro-sphingosine

Lot # S102067



Cell permeable ceramide analog. Induces apoptosis in a variety of cell types. Stimulates ceramide-activated protein phosphatases. Activates ceramide-activated protein kinases.

- 1) Minano *et al.* (2008), *C2-ceramide mediates cerebellar granule cells apoptosis by activation of caspases-2, -9, and -3*; J. Neurosci. Res., **86** 1734
- 2) Prinetti *et al.* (1997), *Involvement of a ceramide activated protein phosphatase in the differentiation of neuroblastoma Neuro2a cells*; FEBS Lett., **414** 475
- 3) Zhang *et al.* (1997), *Kinase suppressor of Ras is ceramide-activated protein kinase*; Cell, **89** 63
- 4) Matsuzaka *et al.* (2016) *Characterization and Functional Analysis of Extracellular Vesicles and Muscle-Abundant miRNAs (miR-1, miR-133a, and miR-206) in C2C12 Myocytes and mdx Mice*; PLoS One **11(12)** e0167811 [Focus Citation]

**PHYSICAL DATA**

Molecular Weight:	341.54
Molecular Formula:	C <sub>20</sub> H <sub>39</sub> NO <sub>3</sub>
Purity:	98% by TLC
	NMR: (Conforms)
Solubility:	DMSO (up to 50 mg/ml), or ethanol (up to 25 mg/ml)
Physical Description:	White solid
Storage and Stability:	Store as supplied at -20°C for up to 2 years from the date of purchase. Solutions in DMSO or ethanol may be stored at -20°C for up to 3 months.

**Materials provided by Focus Biomolecules are for laboratory research use only and are not intended for human or veterinary applications.**