

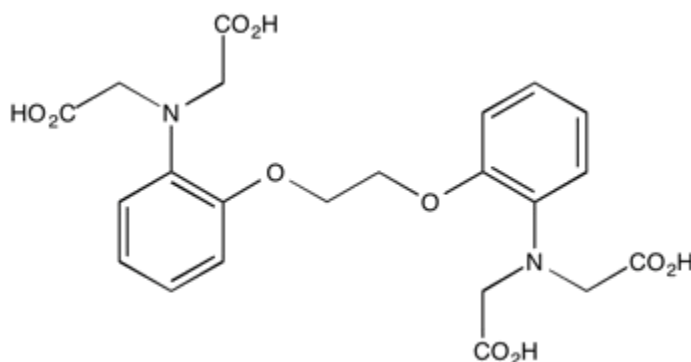
Catalog # 10-1204

BAPTA

CAS# 85233-19-8

1,2-bis-(2-Aminophenoxy)ethane-N,N,N',N',-tetracetic acid

Lot # X101438



BAPTA is a selective extracellular Ca^{2+} chelator. It is a widely used calcium sponge for chelating Ca^{2+} outside of intact cells.¹ It's a useful tool to probe the involvement of extracellular Ca^{2+} in cellular signaling.^{2,3} Non-cell-permeable.

- 1) Munoz *et al.* (2015), *Different Stress-Induced Calcium Signatures Are Reported by Aequorin-Mediated Calcium Measurements in Living Cells of Aspergillus fumigatus*; PLoS One, **10(9)** e0138008
- 2) Wozniak *et al.* (2017), *Extracellular Ca^{2+} is Required for Fertilization in the African Clawed Frog, *Xenopus laevis**; PLoS One, **12(1)** e0170405
- 3) Didiasova *et al.* (2015), *STIM1/ORAI1-mediated Ca^{2+} Influx Regulates Enolase-1 Exteriorization*; J. Biol. Chem., **290** 11983

PHYSICAL DATA

Molecular Weight:	476.43
Molecular Formula:	$\text{C}_{22}\text{H}_{24}\text{N}_2\text{O}_{10}$
Purity:	97% by HPLC
	NMR: (Conforms)
Solubility:	DMSO (up to 20 mg/ml)
Physical Description:	White solid
Storage and Stability:	Store as supplied desiccated at room temperature for up to 1 year from the date of purchase. Solutions in DMSO may be stored at -20°C for up to 1 month.

Materials provided by Focus Biomolecules are for laboratory research use only and are not intended for human or veterinary applications.