

Catalog # 10-1349

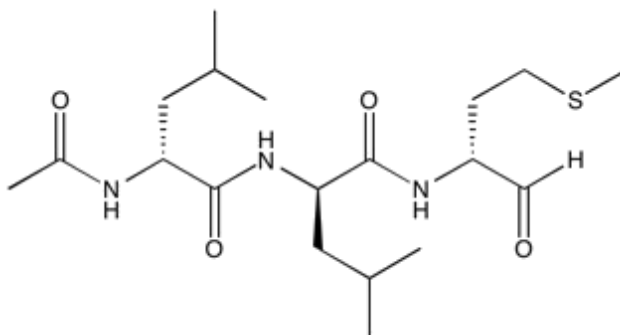
ALLM

CAS# 136632-32-1

N-Acetyl-Leu-Leu-Methional

Ac-LLM-CHO

Lot # X101630



Cell-permeable, peptide aldehyde inhibitor of calpain (calpain I, $K_i = 120$ nM, calpain II, $K_i = 230$ nM) and other neutral cysteine proteases. Potent inhibitor of cathepsin L ($K_i=0.6$ nM) and cathepsin B ($K_i=100$ nM).¹ Weak inhibitor of the chymotrypsin-like activity of the proteasome.² Cell permeable.

- 1) Sasaki *et al.* (1990), *Inhibitory effect of di- and tripeptidyl aldehydes on calpains and cathepsins* J. Enzyme Inhib., **3** 195
- 2) Vinitzky *et al.* (1992), *Inhibition of the chymotrypsin-like activity of the pituitary multicatalytic proteinase complex*; Biochemistry, **31** 9421

PHYSICAL DATA

Molecular Weight:	401.56
Molecular Formula:	C ₁₉ H ₃₅ N ₃ O ₄ S
Purity:	98% by HPLC
	NMR: (Conforms)
Solubility:	DMSO (up to 10 mg/ml), or Ethanol (up to 5 mg/ml)
Physical Description:	White solid
Storage and Stability:	Store as supplied, desiccated at -20°C for up to 1 year from the date of purchase. Solutions in DMSO or ethanol may be stored at -20°C for up to 1 month.

Materials provided by Focus Biomolecules are for laboratory research use only and are not intended for human or veterinary applications.