

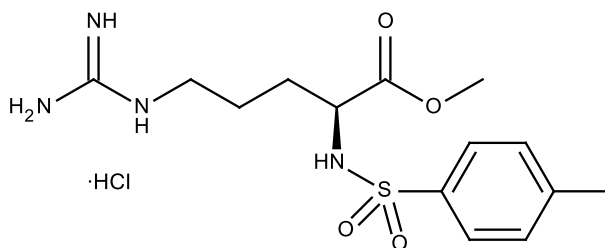
Catalog # 10-1364

TAME

CAS# 1784-03-8

N-p-Tosyl-L-arginine methyl ester hydrochloride

Lot # X104288



TAME binds to the ubiquitin ligase anaphase-promoting complex (APC) preventing its activation by Cdc20 and Cdh1 and resulting in mitotic arrest.^{1,2}

- 1) Zeng *et al.* (2010) *Pharmacologic inhibition of the anaphase-promoting complex induces a spindle checkpoint-dependent mitotic arrest in the absence of spindle damage* *Cancer Cell* **18** 382
- 2) Zeng and King (2012) *An APC/C inhibitor stabilizes Cyclin B1 by prematurely terminating ubiquitination* *Nat.Chem.Biol.* **8** 383

PHYSICAL DATA

Molecular Weight:	378.87
Molecular Formula:	C ₁₄ H ₂₂ N ₄ O ₄ S·HCl
Purity:	>98% by TLC
	NMR: Conforms
Solubility:	Water (at least 30 mg/mL); DMSO (at least 30 mg/mL)
Physical Description:	White solid
Storage and Stability:	Store as supplied at -20°C for up to 2 years from the date of purchase. Protect from exposure to moisture. Solutions may be stored at -20°C for up to 3 months.

Materials provided by Focus Biomolecules are for laboratory research use only and are not intended for human or veterinary applications.