

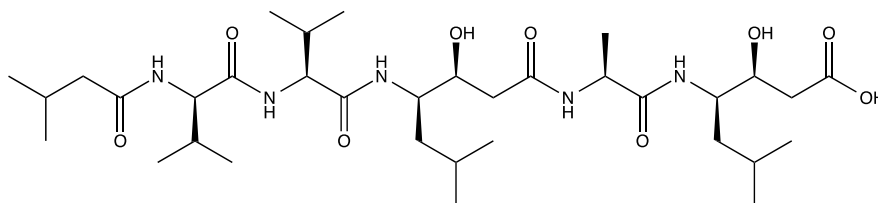
Catalog # 10-1368

Pepstatin A

N-isovaleryl-L-valyl-L-valyl-3-hydroxy-6-methyl-γ-aminoheptanoyl-L-alanyl-3-hydroxy-6-methyl-γ-amino heptanoic acid (synthetic)

CAS# 26305-03-3

Lot # X101300



Selective inhibitor of aspartyl proteases.¹ Inhibits human pepsin, human gastricsin, renin, cathepsin D and E and bovine chymosin.² Does not inhibit thiol proteases, neutral proteases or serine proteases.³ It suppresses RANKL-induced osteoclast differentiation.⁴

- 1) Merck Index 14:7147
- 2) Marcinişzyn *et al.* (1976) *Mode of inhibition of acid proteases by pepstatin* J.Biol.Chem. **251** 7088
- 3) Oda (2012) *New families of carboxy peptidases: serine-carboxyl peptidases and glutamic peptidases*. J.Biochem. **151** 13
- 4) Yoshida *et al.* (2006) *Pepstatin A, an aspartic proteinase inhibitor, suppresses RANKL-induced osteoclast differentiation* J.Biochem. **139** 583

PHYSICAL DATA

Molecular Weight:	685.90
Molecular Formula:	C ₃₄ H ₆₃ N ₅ O ₉
Purity:	>98% (HPLC); Net Peptide Content: >98%
	NMR: Conforms
Solubility:	DMSO(5 mg/mL); Ethanol(1 mg/ml)
Physical Description:	White solid
Storage and Stability:	Store as supplied at -20°C for up to one year from the date of purchase. Solutions in DMSO and ethanol may be stored at -20°C for up to 2 months

Materials provided by Focus Biomolecules are for laboratory research use only and are not intended for human or veterinary applications.