



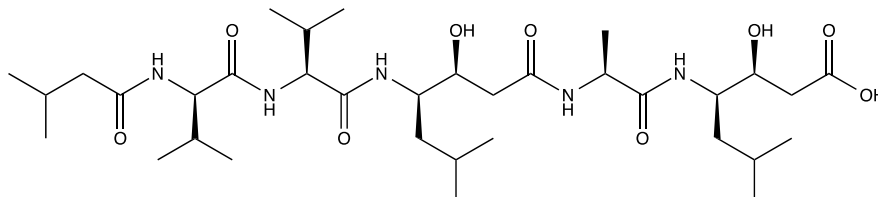
Catalog # 10-1368

Pepstatin A

N-isovaleryl-L-valyl-L-valyl-3-hydroxy-6-methyl- γ -aminoheptanoyl-L-alanyl-3-hydroxy-6-methyl- γ -amino heptanoic acid (synthetic)

CAS# 26305-03-3

Lot # X101299



Selective inhibitor of aspartyl proteases.¹ Inhibits human pepsin, human gastricsin, renin, cathepsin D and E and bovine chymosin.² Does not inhibit thiol proteases, neutral proteases or serine proteases.³ It suppresses RANKL-induced osteoclast differentiation.⁴

- 1) Merck Index 14:7147
- 2) Marcinişzyn *et al.* (1976) *Mode of inhibition of acid proteases by pepstatin* J.Biol.Chem. **251** 7088
- 3) Oda (2012) *New families of carboxy peptidases: serine-carboxyl peptidases and glutamic peptidases*. J.Biochem. **151** 13
- 4) Yoshida *et al.* (2006) *Pepstatin A, an aspartic proteinase inhibitor, suppresses RANKL-induced osteoclast differentiation* J.Biochem. **139** 583

PHYSICAL DATA

Molecular Weight:	685.90
Molecular Formula:	C ₃₄ H ₆₃ N ₅ O ₉
Purity:	>98% (HPLC); Net Peptide Content: >98%
	NMR: Conforms
Solubility:	DMSO(5 mg/mL); Ethanol(1 mg/ml)
Physical Description:	White solid
Storage and Stability:	Store as supplied at -20°C for up to one year from the date of purchase. Solutions in DMSO and ethanol may be stored at -20°C for up to 2 months

Materials provided by Focus Biomolecules are for laboratory research use only and are not intended for human or veterinary applications.

Focus Biomolecules LLC 400 Davis Drive, Suite 600 Plymouth Meeting PA 19462

www.focusbiomolecules.com