



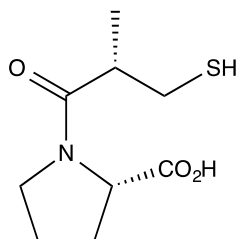
Catalog # 10-2253

Captopril

(2S)-1-(3-Mercapto-2-methyl-propionyl)-L-proline

62571-86-2

Lot # X101011



Captopril is an angiotensin-converting enzyme (ACE) inhibitor ($IC_{50} = 0.022 \mu\text{M}$).¹ Also inhibits the bifunctional Zn^{2+} -containing leukotriene A_4 hydrolase/aminopeptidase (LTA_4 hydrolase) reversibly and competitively ($K_i = 6.0 \mu\text{M}$ for leukotriene B_4 formation and $K_i = 60 \text{ nM}$ for L-lysine-p-nitroanilide).² Displays vasodilatory and antihypertensive effects *in vivo*. Clinically useful antihypertensive agent.

- 1) Cushman *et al.* (1999), *Design of angiotensin converting enzyme inhibitors*; Nat.Med. **5** 1110
- 2) Orning *et al.* (1991), *Inhibition of leukotriene A_4 hydrolase/aminopeptidase by captopril*; J.Biol.Chem. **266** 16507

PHYSICAL DATA

Molecular Weight:	217.28
Molecular Formula:	$C_9H_{15}NO_3S$
Purity:	>98% HPLC
	NMR: (Conforms)
Solubility:	DMSO (20 mg/mL); water (20 mg/mL)
Physical Description:	White solid
Storage and Stability:	Store as supplied desiccated at -20°C for up to 1 year from the date of purchase. Solutions in DMSO and water may be stored at -20°C for up to 1 month.

Materials provided by Focus Biomolecules are for laboratory research use only and are not intended for human or veterinary applications.

Focus Biomolecules LLC 400 Davis Drive, Suite 600 Plymouth Meeting PA 19462

www.focusbiomolecules.com