

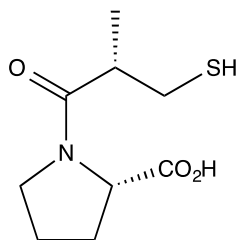
Catalog # 10-2253

Captopril

(2S)-1-(3-Mercapto-2-methyl-propionyl)-L-proline

62571-86-2

Lot # X101009



Captopril is an angiotensin-converting enzyme (ACE) inhibitor ($IC_{50} = 0.022 \mu\text{M}$).¹ Also inhibits the bifunctional Zn^{2+} -containing leukotriene A_4 hydrolase/aminopeptidase (LTA_4 hydrolase) reversibly and competitively ($K_i = 6.0 \mu\text{M}$ for leukotriene B_4 formation and $K_i = 60 \text{ nM}$ for L-lysine-p-nitroanilide).² Displays vasodilatory and antihypertensive effects *in vivo*. Clinically useful antihypertensive agent.

- 1) Cushman *et al.* (1999), *Design of angiotensin converting enzyme inhibitors*; Nat.Med. **5** 1110
- 2) Orning *et al.* (1991), *Inhibition of leukotriene A_4 hydrolase/aminopeptidase by captopril*; J.Biol.Chem. **266** 16507

PHYSICAL DATA

Molecular Weight:	217.28
Molecular Formula:	$C_9H_{15}NO_3S$
Purity:	>98% HPLC
	NMR: (Conforms)
Solubility:	DMSO (20 mg/mL); water (20 mg/mL)
Physical Description:	White solid
Storage and Stability:	Store as supplied desiccated at -20°C for up to 1 year from the date of purchase. Solutions in DMSO and water may be stored at -20°C for up to 1 month.

Materials provided by Focus Biomolecules are for laboratory research use only and are not intended for human or veterinary applications.