



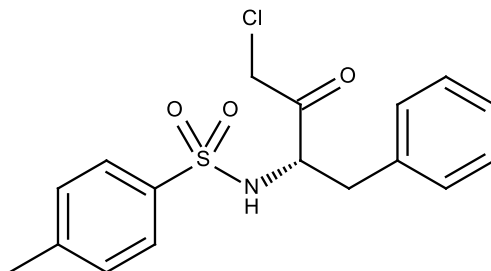
## Catalog # 10-2290

### TPCK

CAS# 402-71-1

N-p-Tosyl-L-phenylalanine chloromethyl ketone

Lot # X101719



TPCK is an irreversible inhibitor of the serine protease chymotrypsin.<sup>1</sup> It also inhibits certain cysteine proteases (bromelain, ficin, papain).<sup>1</sup> TPCK inhibited ( $IC_{50} = 5 \mu M$ ) the mitogen-induced activation of pp70s6k, a mitogen-regulated serine/threonine kinase involved in the G1 to S phase transition of the cell cycle.<sup>2</sup>

- 1) Bond and Butler, (1987) *Intracellular proteases* Annu.Rev.Biochem. **56** 333
- 2) Grammer and Blenis (1996) *The serine protease inhibitors, tosylphenylalanine chloromethylketone and tosyllysine chloromethylketone, potently inhibit pp70s6k activation* J.Biol.Chem **271** 23650

### PHYSICAL DATA

Molecular Weight:	351.85
Molecular Formula:	C <sub>17</sub> H <sub>18</sub> ClNO <sub>3</sub> S
Purity:	>98% by TLC
	NMR: (Conforms)
Solubility:	DMSO (at least 10 mg/mL)
Physical Description:	White solid
Storage and Stability:	Store as supplied at -20°C for up to 1 year from the date of purchase. Solutions in DMSO may be stored at -20°C for up to 3 months.

Materials provided by Focus Biomolecules are for laboratory research use only and are not intended for human or veterinary applications.