

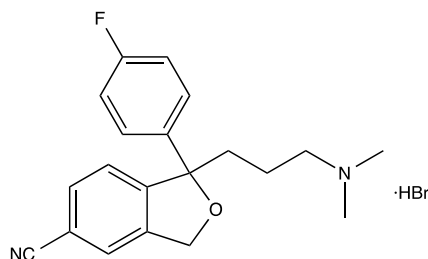
Catalog # 10-2458

Citalopram HBr

CAS# 59729-32-7

1-[3-(Dimethylamino)propyl]-1-(4-fluorophenyl)-1,3-dihydro-5-isobenzofurancarbonitrile hydrobromide

Lot # X101477



Potent and selective serotonin uptake inhibitor (SSRI) $K_i=5.4$ nM. Has no effect on norepinephrine or dopamine uptake.¹ Displays cardioprotective effects in part by reducing expression of cytokine-induced endothelial adhesion molecules, ICAM-1 and VCAM-1.² Clinically useful antidepressant.³ Attenuates ethanol intake.⁴

- 1) Mateo *et al.* (2000), *Inhibition of 5-hydroxytryptamine reuptake by the antidepressant citalopram in the locus coeruleus modulates the rat brain noradrenergic transmission in vivo*; *Neuropharmacology* **39** 2036
- 2) Lekakis *et al.* (2010), *Selective serotonin re-uptake inhibitors decrease the cytokine-induced endothelial adhesion molecule expression, the endothelial adhesiveness to monocytes and the circulating levels of vascular adhesion molecules*; *Int.J.Cardiol.* **139** 150
- 3) Cipriani *et al.* (2009), *Comparative efficacy and acceptability of 12 new-generation antidepressants: a multiple-treatments meta-analysis*; *Lancet* **373** 746
- 4) Naranjo *et al.* (1987), *The serotonin uptake inhibitor citalopram attenuates ethanol intake*; *Clin.Pharmacol.Ther.* **41** 266

PHYSICAL DATA

Molecular Weight:	405.31
Molecular Formula:	C ₂₀ H ₂₁ FN ₂ O·HBr
Purity:	>98% by TLC
	NMR: (Conforms)
Solubility:	Water (up to 4 mg/ml); DMSO (25 mg/mL); ethanol (20 mg/mL)
Physical Description:	White solid
Storage and Stability:	Store as supplied desiccated at -20°C for up to 2 years from the date of purchase. Solutions in Water, DMSO, or ethanol may be stored at -20°C for up to 2 months.

Materials provided by Focus Biomolecules are for laboratory research use only and are not intended for human or veterinary applications.