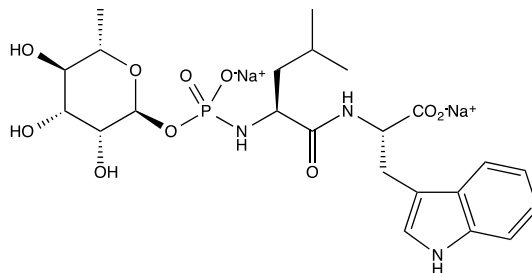


Catalog # 10-2548

Phosphoramidon

CAS# 119942-99-3

N-(α -Rhamnopyranosyloxyhydroxyphosphinyl)-L-leucyl-L-tryptophan • 2Na
Lot # X101327



Inhibits neutral endopeptidase 24.11 (NEP; Neprilysin; EC 3.4.24.11), $K_i=2$ nM.¹ Also inhibits neprilysin 2 ($K_i=2$ nM).² Also inhibits endothelin-converting enzyme ($IC_{50} = 0.68$ μ M).³ Induces a dramatic increase in amyloid-beta levels in rodents.⁴

- 1) Stephenson and Kenny *et al.* (1987), *The hydrolysis of alpha-human atrial natriuretic peptide by pig kidney microvillar membranes is initiated by endopeptidase-24.11.*; Biochem. J., **243** 183.
- 2) Rose *et al.* (2002), *Cell-specific activity of neprilysin 2 isoforms and enzymic specificity compared with neprilysin*; Biochem. J., **363** 697
- 3) Ahn *et al.* (1998), *Soluble human endothelin-converting enzyme-1: expression, purification, and demonstration of pronounced pH sensitivity*; Arch. Biochem. Biophys., **359** 258
- 4) Marr and Hafez (2014), *Amyloid-beta and Alzheimer's disease: the role of neprilysin-2 in amyloid-beta clearance*; Front. Aging Neurosci., **6** 187

PHYSICAL DATA

Molecular Weight:	587.47
Molecular Formula:	C ₂₃ H ₃₂ N ₃ O ₁₀ P•2Na
Purity:	>97% by TLC
	NMR: Conforms
Solubility:	DMSO (>25 mg/ml), water (>25 mg/ml), Methanol
Physical Description:	White solid
Storage and Stability:	Store as supplied at -20°C for up to 2 years from the date of purchase. Solutions in DMSO or water may be stored at -20°C for up to 2 months.

Materials provided by Focus Biomolecules are for laboratory research use only and are not intended for human or veterinary applications.