

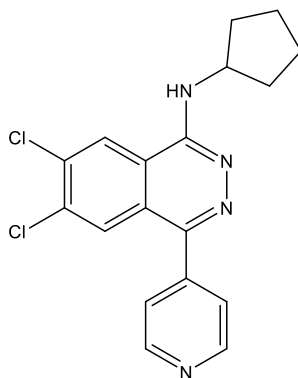
Catalog # 10-4018

A-196

CAS# 1982372-88-2

Cyclopentyl-(6,7-dichloro-4-pyridin-4-yl-phthalazin-1-yl)-amine

Lot # FBS1100



A-196 is a potent and selective (over 29 other methyltransferases) inhibitor of the protein lysine methyltransferases SUV420H1 (IC₅₀ = 25 nM) and SUV420H2 (IC₅₀ = 144 nM). It substantially inhibited non-homologous end-joining (NHEJ)-directed DNA repair but not homology-directed repair (HDR) in cells treated with ionizing radiation. A-196 is active in cells and displayed no toxicity in several cell lines.

- 1) Bromberg *et al.* (2017), *The SUV4-20 inhibitor A-196 verifies a role for epigenetics in genomic integrity*; Nat.Chem.Biol. **13** 317

PHYSICAL DATA

Molecular Weight:	359.25
Molecular Formula:	C ₁₈ H ₁₆ Cl ₂ N ₄
Purity:	>98%
	NMR: (Conforms)
Solubility:	Soluble in DMSO (5 mg/ml)
Physical Description:	White solid
Storage and Stability:	Store as supplied at -20° for up to 1 year from the date of purchase. Store solutions at -20°C for up to 1 month.

Materials provided by Focus Biomolecules are for laboratory research use only and are not intended for human or veterinary applications.