

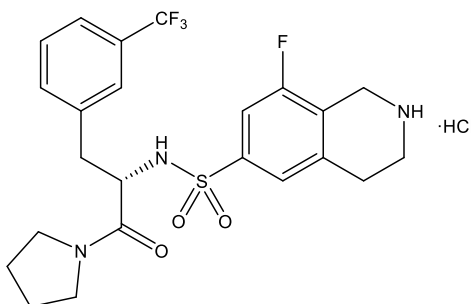


**Catalog # 10-4033**

**(R)-PFI-2 HCl**

CAS# 1627607-87-7

(1R)-1-[[3-(Trifluoromethyl)phenyl]methyl]-2-oxo-2-(1-pyrrolidinyl)ethyl-1,2,3,4-tetrahydro-6-isoquinolinesulfonamide hydrochloride  
Lot # FBS1106



(R)-PFI-2 is a potent ( $IC_{50} = 2nM$ ) and selective SAM-dependent inhibitor of the lysine methyltransferase SETD7.<sup>1</sup> It alters Hippo pathway signaling in MCF7 cells by altering YAP nuclear localization in a SETD7-dependent manner.

- 1) Barsyte-Lovejoy *et al.* (2014), *(R)-PFI-2 is a potent and selective inhibitor of SETD7 methyltransferase activity in cells;* Proc.Natl.Acad.Sci.USA 111 12853

### **PHYSICAL DATA**

Molecular Weight: 535.98  
Molecular Formula:  $C_{23}H_{25}F_4N_3O_3S \cdot HCl$   
Purity: >98%  
NMR: (Conforms)  
Solubility: Soluble in DMSO (>25 mg/ml)  
Physical Description: White solid  
Storage and Stability: Store as supplied at  $-20^{\circ}$  for up to 1 year from the date of purchase. Store solutions at  $-20^{\circ}C$  for up to 1 month.

**Materials provided by Focus Biomolecules are for laboratory research use only and are not intended for human or veterinary applications.**

Focus Biomolecules LLC 400 Davis Drive, Suite 600 Plymouth Meeting PA 19462  
[www.focusbiomolecules.com](http://www.focusbiomolecules.com)