

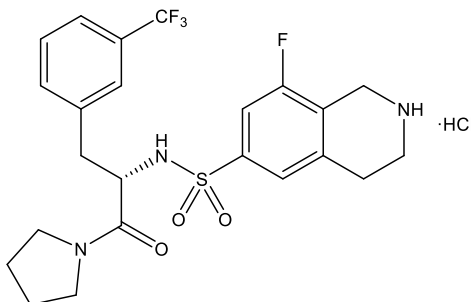


Catalog # 10-4033

(R)-PFI-2 HCl

CAS# 1627607-87-7

(1R)-1-[[3-(Trifluoromethyl)phenyl]methyl]-2-oxo-2-(1-pyrrolidinyl)ethyl-1,2,3,4-tetrahydro-6-isoquinolinesulfonamide hydrochloride
Lot # FBS1106



(R)-PFI-2 is a potent ($IC_{50} = 2nM$) and selective SAM-dependent inhibitor of the lysine methyltransferase SETD7.¹ It alters Hippo pathway signaling in MCF7 cells by altering YAP nuclear localization in a SETD7-dependent manner.

- 1) Barsyte-Lovejoy *et al.* (2014), *(R)-PFI-2 is a potent and selective inhibitor of SETD7 methyltransferase activity in cells;* Proc.Natl.Acad.Sci.USA 111 12853

PHYSICAL DATA

Molecular Weight: 535.98
Molecular Formula: $C_{23}H_{25}F_4N_3O_3S \cdot HCl$
Purity: >98%
NMR: (Conforms)
Solubility: Soluble in DMSO (>25 mg/ml)
Physical Description: White solid
Storage and Stability: Store as supplied at -20° for up to 1 year from the date of purchase. Store solutions at $-20^{\circ}C$ for up to 1 month.

Materials provided by Focus Biomolecules are for laboratory research use only and are not intended for human or veterinary applications.

Focus Biomolecules LLC 400 Davis Drive, Suite 600 Plymouth Meeting PA 19462
www.focusbiomolecules.com