

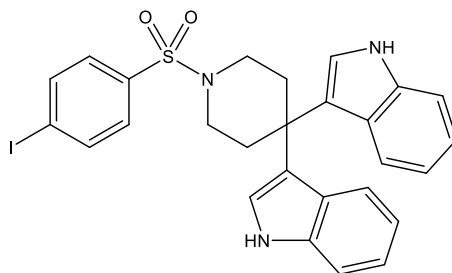
Catalog # 10-4075

SIC5-6

CAS# 2410846-16-9

3,3'-(1-((4-Iodophenyl)sulfonyl)piperidine-4,4'diyl)bis(1H-indole)

Lot # FBA6169



Separase is a cysteine protease that triggers chromosome segregation during mitosis and is highly overexpressed in many cancers. SIC5-6 is an inhibitor of separase with no inhibition of the related protease caspase-1 *in vitro*. HeLa cells with dysregulated separase activity showed severe chromosome segregation defects on treatment with 30 μ M SIC5-6 indicating a potential attractive new chemotherapeutic target.

- 1) Henschke *et al.* (2019), *Identification of Bioactive Small Molecule Inhibitors of Separase*; ACS Chem. Biol. **14** 2155

PHYSICAL DATA

Molecular Weight:	581.47
Molecular Formula:	C ₂₇ H ₂₄ IN ₃ O ₂ S
Purity:	>97% (HPLC)
	NMR: (Conforms)
Solubility:	Soluble in DMSO (>50 mg/ml)
Physical Description:	White solid
Storage and Stability:	Store as supplied at -20°C for up to 1 year from the date of purchase. Protect from light. Store solutions at -20°C for up to 1 month.

Materials provided by Focus Biomolecules are for laboratory research use only and are not intended for human or veterinary applications.

Focus Biomolecules LLC 400 Davis Drive, Suite 600 Plymouth Meeting PA 19462

www.focusbiomolecules.com