

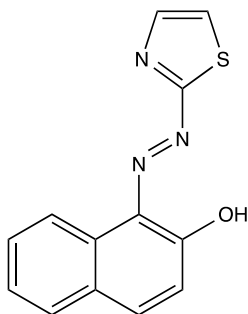
Catalog # 10-4290

ERGi-USU

CAS# 1147-56-4

1-(2-Thiazolylazo)-2-naphthol; NSC139021

Lot # FBS1081



ERGi-USU selectively inhibits the growth of ERG-positive VCaP prostate cancer cells, COLO320 colon cancer cells, KG-1 and MOLT-4 leukemia cells with minimal effect on ERG-negative cells or normal prostate or endothelial cells ($IC_{50} = 169$ nM for cell growth and 315 nM for ERG protein in VCaP cells). It selectively inhibits the kinase RIOK2 ($K_d = 200$ nM) causing disruption of ribosomal biogenesis and ribosomal stress.

- 1) Mohamed *et al.* (2018), *Identification of a Small Molecule That Selectively Inhibits ERG-Positive Cancer Cell Growth*; Cancer Res. **78** 3659

PHYSICAL DATA

| | |
|------------------------|--|
| Molecular Weight: | 255.30 |
| Molecular Formula: | C ₁₃ H ₉ N ₃ OS |
| Purity: | 98% by TLC |
| | NMR: (Conforms) |
| Solubility: | DMSO (>10 mg/mL) |
| Physical Description: | Red/orange solid |
| Storage and Stability: | Store as supplied at -20°C for up to 1 year from the date of purchase. Solutions in DMSO may be stored at -20°C for up to 1 month. |

Materials provided by Focus Biomolecules are for laboratory research use only and are not intended for human or veterinary applications.