



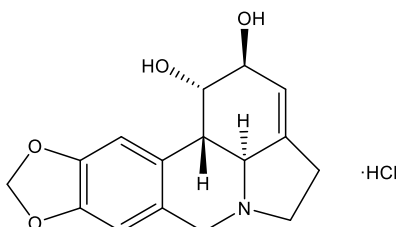
Catalog # 10-2608

Lycorine HCl

CAS# 2188-68-3

An alkaloid from Amaryllidaceae
Galanthidine; Amarylline; Narcissine

Lot # X102725



Lycorine arrests cell cycle at G2/M phase and induces apoptosis in tumor cells.¹ Inhibits human enterovirus 71 replication by blocking elongation of the viral polyprotein during translation and reduces viral cytopathic effects in mice.² Dose-dependently extends the circadian period length in mammalian cells by enhancing Bmal1 transcription.³ Selectively inhibits human ovarian cancer cell proliferation and neovascularization (IC₅₀=1.2 μM⁴). A potent SREBF chaperone (SCAP) degrader (K_d=15.24 nM) which acts via an autophagy-independent lysosomal pathway.⁵

- 1) Miliauskas *et al.* (2005), *Identification of radical scavenging compounds in Rhaponticum carthamoides by means of LC-DAD-SPE-NMR*; J. Nat. Prod., **68** 168
- 2) Liu *et al.* (2011), *Lycorine reduces mortality of human enterovirus 71-infected mice by inhibiting virus replication*; Virol. J., **8** 483
- 3) Onishi *et al.* (2012), *Lycorine, a candidate for the control of period length in mammalian cells*; Cell Physiol. Biochem., **29** 407
- 4) Cao *et al.* (2013), *Lycorine hydrochloride selectively inhibits human ovarian cancer cell proliferation and tumor neovascularization with very low toxicity*; Toxicol. Lett., **218** 174
- 5) Zheng *et al.* (2020), *The Paf1 complex transcriptionally regulates the mitochondrial anchored protein Atg32 leading to activation of mitophagy*; Autophagy, **20** 1

PHYSICAL DATA

Molecular Weight:	323.77
Molecular Formula:	C ₁₆ H ₁₇ NO ₄ • HCl
Purity:	98% by TLC
	NMR: (Conforms)
Solubility:	Water (up to 15 mg/ml)
Physical Description:	White or off-white solid
Storage and Stability:	Store as supplied desiccated at room temperature for up to 2 years from the date of purchase. Solutions in distilled water may be stored at -20°C for up to 1 month.

Materials provided by Focus Biomolecules are for laboratory research use only and are not intended for human or veterinary applications.