

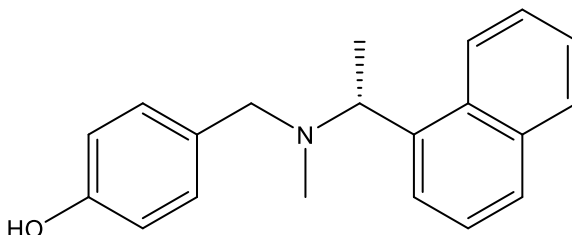
**Catalog # 10-4966**

**Jun9-72-2**

CAS# 2657659-42-0

4-[[Methyl-[(1R)-1-naphthalen-1-ylethyl]amino]methyl]phenol

Lot # FBA7177



Jun9-72-2 is potent inhibitor ( $IC_{50} = 670$  nM) of SARS-CoV2 papain-like (PL) protease. It showed potent antiviral activity in both Vero E6 ( $EC_{50} = 6.62$   $\mu$ M) and Caco2-hACE2 ( $EC_{50} = 7.90$   $\mu$ M) cell lines.

#### References:

- 1) Ma *et al.* (2021), *Discovery of SARS-CoV-2 Papain-like Protease Inhibitors through a Combination of High-Throughput Screening and a FlipGFP-Based Reporter Assay*, ACS Cent. Sci., **7** 1245

#### PHYSICAL DATA

Molecular Weight:	291.39
Molecular Formula:	C <sub>20</sub> H <sub>21</sub> NO
Purity:	>98% by HPLC
	NMR: (Conforms)
Solubility:	DMSO (>30 mg/ml)
Physical Description:	White solid
Storage and Stability:	Store as supplied desiccated at -20°C for up to 2 years from the date of purchase. Solutions in DMSO or ethanol may be stored at -20°C for up to 3 months.

**Materials provided by Focus Biomolecules are for laboratory research use only and are not intended for human or veterinary applications.**

Focus Biomolecules LLC 400 Davis Drive, Suite 600 Plymouth Meeting PA 19462

[www.focusbiomolecules.com](http://www.focusbiomolecules.com)