

Catalog # 10-3417

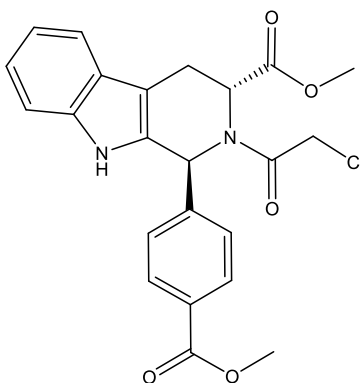
RSL3

CAS# 1219810-16-8

(1*S*,3*R*)-Methyl 2-(2-chloroacetyl)-2,3,4,9-tetrahydro-1-[4-(methoxycarbonyl)phenyl]-1*H*-pyrido[3,4-*b*]indole-3-carboxylate;

1*S*,3*R*-RSL3

Lot # X109819



Inhibits glutathione peroxidase (GPX4) inducing ferroptosis.^{1,2} Effectively induces ferroptosis in glioblastoma cells.³ Everolimus in combination with RSL3 synergistically inhibits the viability of renal cell carcinoma (RCC) cells suggesting a mechanism by which RCC drug resistance may be overcome.⁴

- 1) Yang *et al.* (2014), *Regulation of ferroptotic cancer cell death by GPX4*; Cell **156** 317
- 2) Kagan *et al.* (2017), *Oxidized arachidonic and adrenic PEs navigate cells to ferroptosis*; Nat. Chem. Biol. **13** 81
- 3) Shengbiao *et al.* (2021), *RSL3 Drives Ferroptosis through NF- κ B Pathway Activation and GPX4 depletion in Glioblastoma*; Oxid. Med. Cell. Longev. **2021** 2915019
- 4) Yangyun *et al.* (2022), *Everolimus accelerates Erastin and RSL3-induced ferroptosis in renal cell carcinoma*; Gene **809** 145992

PHYSICAL DATA

Molecular Weight:	440.88
Molecular Formula:	C ₂₃ H ₂₁ ClN ₂ O ₅
Purity:	>98% by HPLC
	NMR: (Conforms)
Solubility:	DMSO (45 mg/ml)
Physical Description:	Off-white solid
Storage and Stability:	Store as supplied at -20°C for up to 2 years from the date of purchase. Solutions in DMSO may be stored at -20°C for up to 1 month.

Materials provided by Focus Biomolecules are for laboratory research use only and are not intended for human or veterinary applications.