

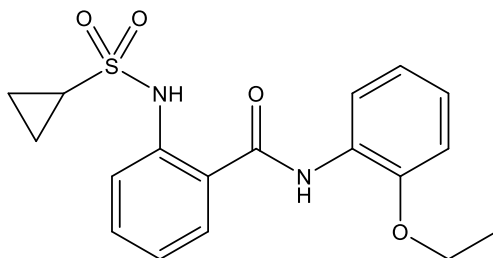
Catalog # 10-3937

ML382

CAS# 1646499-97-9

2-(Cyclopropanesulfonylamino)-N-(2-ethoxyphenyl)benzamide; 2-(Cyclopropanesulfonamido)-N-(2-ethoxyphenyl)benzamide;
VU0485891

Lot # FBA8238



ML382 is a potent ($EC_{50} = 190$ nM in the presence of the endogenous peptide MRGX1 agonist BAM8-22) and selective positive allosteric modulator of the Mas-related G protein-coupled receptor X1 (MRGX1 or MRGPRX1), a receptor whose expression is limited to subsets of small-diameter sensory neurons in dorsal root ganglia and trigeminal neurons.¹ ML382 significantly enhanced the antihyperalgesic effects of exogenously added BAM8-22 and in mouse models of persistent pain without exogenous BAM8-22, suggesting enhanced pain inhibition from a sufficient supply of endogenous MRGPRX1 ligands and a potential new pain therapeutic.²

- 1) Wen, *et al.* (2015), *Discovery and characterization of 2-(cyclopropanesulfonamido)-N-(2-ethoxyphenyl)benzamide, ML382: a potent and selective positive allosteric modulator of MrgX1*; ChemMedChem.. **10** 57
- 2) Li, *et al.* (2017), *Targeting human Mas-related G protein-coupled receptor X1 to inhibit persistent pain*; Proc. Natl. Acad. Sci. USA. **114** E1996

PHYSICAL DATA

Molecular Weight: 360.43
Molecular Formula: C₁₈H₂₀N₂O₄S
Purity: 99% by HPLC
NMR: Conforms
Solubility: DMSO (>25 mg/ml); Ethanol (5 mg/ml with warming)
Physical Appearance: White solid
Storage and Stability: Store as supplied desiccated at -20°C for up to 2 years from the date of purchase.
Solutions in DMSO may be stored at -20°C for up to 3 months

Materials provided by Focus Biomolecules are for laboratory research use only and are not intended for human or veterinary applications.