

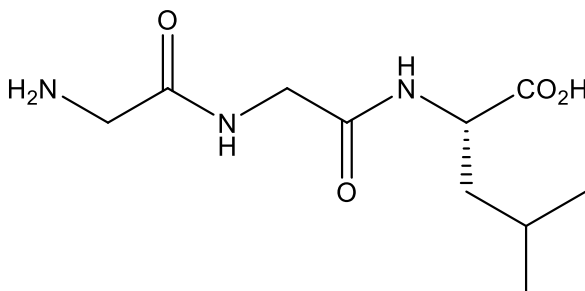
Catalog # 10-5732

DT-109

CAS# 14857-82-0

Glycyl-glycyl-L-leucine; Gly-Gly-Leu-OH

Lot # X109507



DT-109 is glycine-containing peptide which has been demonstrated to ameliorate nonalcoholic fatty liver disease (NAFLD). It improved body composition, and lowered circulating glucose, lipids, transaminases, proinflammatory cytokines and steatohepatitis in mice with established NASH.¹ It dose-dependently attenuates NASH and fibrosis in mice as well as in nonhuman primates.² It induced glutathione biosynthesis in mononuclear cells and demonstrated atheroprotective activity.³

- 1) Rom *et al.* (2020), *Glycine-based treatment ameliorates NAFLD by modulating fatty acid oxidation, glutathione synthesis, and the gut microbiome*; *Sci. Transl. Med.*, **12** eaaz2841
- 2) Qu *et al.* (2023), *DT-109 ameliorates nonalcoholic steatohepatitis in nonhuman primates*; *Cell Metab.*, **35** 742
- 3) Rom *et al.* (2022), *Induction of glutathione biosynthesis by glycine-based treatment mitigates atherosclerosis*; *Redox. Biol.*, **52** 102313

PHYSICAL DATA

Molecular Weight:	245.28
Molecular Formula:	C ₁₀ H ₁₉ N ₃ O ₄
Purity:	>98% by TLC
	NMR: (Conforms)
Solubility:	DMSO (25 mg/ml with warming); water (25 mg/mL)
Physical Description:	White solid
Storage and Stability:	Store as supplied desiccated at -20°C for up to 2 years from the date of purchase. Solutions in DMSO or water may be stored at -20°C for up to 1 month.

Materials provided by Focus Biomolecules are for laboratory research use only and are not intended for human or veterinary applications.